



## **KEY STAGE 4 OPTIONS BOOKLET**

**A guide to your GCSE choices  
in Year 10 and 11 at  
St Peter's Catholic School  
2024 - 2026**

**St Peter's Catholic School Guildford**

Horseshoe Lane East Guildford Surrey GU1 2TN

**Tel:** 01483 534654 **Fax:** 01483 306571**E-mail:** info@st-peters.surrey.sch.uk

www.st-petersschool.co.uk

**Headteacher:** Mr T Miller

November 2023

Dear Year 9 Student,

At this point in your education at St Peter's, you are half way between Year 7 and GCSEs, and it is time now for you to choose the pathway which will lead you on from Year 9. The courses you will study to the end of this year will give you a firm foundation on which to build, but you now have the opportunity to shape much of what you do over the next two years by choosing your option courses.

St Peter's is a successful school with experienced and dedicated staff who can help you make the right choices for your future. This booklet sets out the core subjects, which every student follows, and the options, from which you will choose your GCSE/BTEC subjects. Please make sure that you read this booklet with your parents or carers to gain an overview of all subjects.

On Year 9 parent consultation evening (**Thursday 22nd February 2024**), you will have an opportunity to chat to your subject teachers before you make your choices to ask them if they would recommend that you take their subject at GCSE/BTEC level. Options choices will be made online, with instructions issued following the Year 9 parents evening and a deadline of **26<sup>th</sup> February**. You can choose 3 option subjects and 1 reserve choice.

The GCSEs/BTECs you choose will be the foundation for your continuing education after 16, leading to university, training or employment. Please think carefully about *why* you want to choose some subjects in preference to others. You should take into account your academic success up to now, your interests and your abilities in and outside of the classroom. Listen carefully to advice about which routes you are keeping open and which routes you may be closing off. Choose your options for the *right* reasons and select subjects that you enjoy and which will give you a good grounding for the future - not because a friend has chosen the same course or you hope to be taught by a particular teacher. Continue to research the careers areas you are interested in and consider how you could achieve your goals. If you don't know what you want to do yet, and many of you are in that situation, use the advice you have been given by Mrs Calvert, to select subjects which will keep your options open.

I hope you find this booklet useful. Please do not hesitate to talk to me if you need any further help with your option choices.

With best wishes,

Mr Campbell  
Head of Year 9

## CONTENTS

## Introduction

Letter from Mr Campbell	2
Contents	3
General Advice	4
Frequently Asked Questions	5
What to think about when choosing your option subjects	5
Prayer	6

## Core Subjects

Religious Education	8
Maths	9
English Language and English Literature	10-11
Science	12
Citizenship, Careers & Employability, PE	13

## Option Subjects

Art GCSE	15
Business Studies GCSE	16-17
Certificate of Personal Effectiveness (COPE)	18
Computer Science GCSE	19-20
Design Technology GCSE (with Product or Architecture focus)	21-22
Drama GCSE	23
Enterprise BTEC TECH AWARD	24
Food Preparation & Nutrition GCSE	25
French GCSE	26
Geography GCSE	27
Health & Social Care BTEC TECH AWARD	28
History GCSE	29
Vocational Award in ICT	30
Music GCSE	31-32
Physical Education GCSE	33
Spanish GCSE	34
Textiles and Fashion	35

## GENERAL ADVICE

There are a number of people and resources here to guide and support you:

**Mrs Calvert, Careers Lead and Careers Adviser** who manages the careers education and guidance programme and who provides advice about the choices available to you

**Your Form Tutor** who knows you as an individual student in the school

**Your Subject Teachers** who provide an objective assessment of your ability in their subjects

**Mr Campbell, Head of Year 9**, who will be able to assist and advise your best choices

**Parents and Carers** who know you best of all as a person



**DO** evaluate your subjects in terms of preference and ability. Then check your shortlist against need – is this a subject you need for a particular career?

**DO** keep your options open. Don't try and specialise at this stage but aim for a good balance of subjects.

**DO** work to your own strengths: if you like a lot of reading and writing then choose appropriate subjects, otherwise consider more practical subjects.

**DON'T** choose a subject because a friend is choosing it. There is no guarantee that you will be in the same teaching groups!

**DON'T** choose a subject because you like your teacher. Again, there is no guarantee that he/she will be teaching your group next year.

## FREQUENTLY ASKED QUESTIONS

### **I know the career I want to go into, should I just choose those subjects best suited for this?**

If you have a particular career in mind, check your GCSE subject choices with Mrs Calvert to ensure that you are not restricting your future options. Universities can be quite prescriptive in their requirements.

### **Which subjects will the top universities be looking for?**

We strongly recommend that you refer to the Informed Choices document issued by the Russell Group Universities, (available in the Year 9 Careers area on SharePoint) which is a useful tool to find out what subjects you may need to study at school in order to take a particular degree.

### **Which subjects are employers looking for?**

First and foremost, employers are looking for Mathematics and English GCSE at the equivalent standard of grades 4-9. The higher your grades in all your subjects, the better chance you will have of securing your dream job.

## WHAT TO THINK ABOUT WHEN CHOOSING YOUR OPTION SUBJECTS

- How much reading is involved?
- How much writing is involved?
- How much non-examined assessment (NEA) is involved – where you produce work to be assessed outside of a formal exam?
- What percentage of the marks is given for non-examined assessment?
- Is there an oral test?
- Will you have to gather information yourself?
- Are projects involved?
- What practical skills are involved?
- How much laboratory or fieldwork is involved?



### **“I still don’t know what subjects to choose”**

If you have no idea about a career at this stage, don’t worry. You have plenty of time in the future to consider your career choice. Your aim now should be to choose a selection of subjects that will keep as many options open to you as possible. Choose subjects that you enjoy and are good at.

## PRAYER

Spirit of Wisdom,  
I stand at a crossroads, choosing my path,  
I fear the unknown, I am anxious about my future.

Calm my fear,  
shed your light in my mind that I may see my choices more clearly.

Fill my heart with your love,  
that I may listen gratefully to the advice offered to me.

Give me your peace, that I may accept all the consequences of my  
decisions, making the best of all events.

Bless my work, fulfil my hopes and give  
me the joy that is in Christ Jesus.

**Amen**



## CORE SUBJECTS

The following pages describe the CORE subjects that all students in Year 9 will continue to study:

**Religious Education GCSE**

**Maths GCSE**

**English Language and English Literature GCSEs**

**Science (Combined or separate GCSEs)**

**Citizenship (no exam)**

**Core PE (no exam)**

Please note: The importance of attaining good grades in Maths and English GCSEs cannot be over-emphasized. If you do not pass these with at least a grade 4 in Year 11, the Government requires that you retake them until you achieve this.



**EDUQAS**



**MATHS****EDEXCEL****What will you study in Maths?**

Mathematics is an exciting subject that is used in a huge variety of professions and industries. We follow the Edexcel 3-year syllabus at GCSE which is assessed at Higher and Foundation level. The table below shows the strands of Maths covered in this qualification by both the Higher and Foundation tier; and some topics they will include.

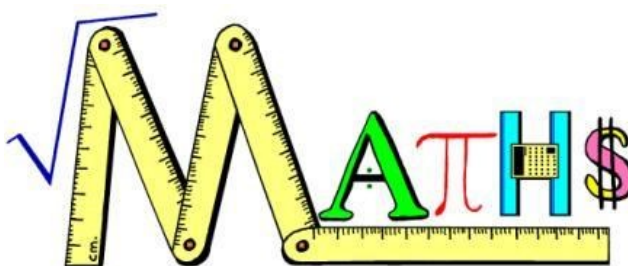
Strand	Topics Included
Number	Types of number, fractions, decimals & percentages, standard form
Algebra	Solving equations, straight line graphs, inequalities, sequences
Ratio, Proportion and Rates of change	Ratio notation, direct and inverse proportion, growth and decay
Geometry and Measures	Perimeter, area and volume, construction, transformations, circle theorems, vectors
Statistics & Probability	Theoretical & experimental probability, averages, drawing and interpreting different graphs and charts

You will be taught a broad base of topics which are then used to solve a variety of styles of problems, building on previous knowledge to incorporate algebraic manipulation and geometrical theorems as well as sophisticated analysis of data. You will be encouraged to show your method; setting your work out using standardised approaches which demonstrates clear mathematical communication.

**How will you be assessed?**

GCSE Mathematics is taken at the end of Year 11 and each consists of 3 exams. Paper one is non-calculator and papers two and three allow the use of a calculator.

If you have a passion for Maths and wish to extend your mathematical knowledge further, you will have the opportunity to do an additional course: the Free-Standing Maths Qualification (FSMQ). This is studied after-school for 1 hour a week in year 11, and is encouraged for students who want to continue with Mathematics or Further Mathematics in the sixth form.

**What skills will you develop and which careers could this subject lead to?**

A good mathematical background is necessary for all walks of life and can lead to a diverse set of careers including medicine, all types of engineering, accountancy, teaching, business, actuarial science and geology.

## ENGLISH LANGUAGE & ENGLISH LITERATURE PEARSON EDEXCEL

### What will you study?

The Pearson Edexcel GCSE is followed in both English Language and English Literature. We will give you the confidence to use literacy skills, knowledge and understanding to succeed not only in your examinations but also as a foundation for further academic study.

The English Language GCSE will prepare you to consider analytically a variety of texts in a range of forms. You will develop as a sensitive and mature reader and they will also learn to create their own texts with imagination and subtlety. English Literature will provide you with the opportunity to: read a wide range of classic literature; to critically evaluate their ideas and to write accurately, effectively and analytically about their reading using a wide vocabulary including grammatical terminology and linguistic terms.

### How will you be assessed?

You will undertake two separate GCSEs in English Language and English Literature. These are assessed by terminal examinations at the end of Year 11.

### English Language 2.0

We will prepare you for the English Language examination by reading and analysing a range of fiction and non-fiction texts whilst developing your imaginative and transactional writing skills. These are examined in two examinations at the end of the course:

<b>Paper 1:</b>  Non Fiction Texts	<b>Section A – 19<sup>th</sup> Century Non-Fiction tests:</b> Study and analysis of selection of 19 <sup>th</sup> Century Non-Fiction extracts.  <b>Section B – Transactional writing:</b> Explore and develop a variety of transactional writing skills.  50% of the total GCSE	Terminal examination  1hour 55 minutes
<b>Paper 2:</b>  Contemporary Texts	<b>Section A – 20<sup>th</sup> and 21<sup>st</sup> Century Prose Fiction extracts:</b> Study and analysis of 20 <sup>th</sup> and 21 <sup>st</sup> Century Prose Fiction extracts.  <b>Section B – Imaginative writing:</b> Explore and develop imaginative writing skills.  50% of the total GCSE	Terminal examination  1 hour 55 minutes



## English Literature

Unit 1: Shakespeare and Post-1914 Literature	<b>Section A</b> – <i>Macbeth</i> by William Shakespeare. <b>Section B</b> – <i>Boys Don't Cry</i> by Malorie Blackman  50% of the total GCSE	Terminal examination 1 hour 45 minutes
Unit 2: 19th- Century Novel and Poetry since 1789	<b>Section A</b> – <i>Dr Jekyll and Hr Hyde</i> by Robert Louis Stevenson. <b>Section B</b> – one collection of 15 poems from the Pearson Poetry Anthology. 50% of the total GCSE	Terminal examination 2 hours 15 minutes

GCSEs in English Language and English Literature will provide you with many skills. As well as being a requirement for most areas of further study, English is also highly regarded by employers who appreciate the need to have employees with high levels of literacy and excellent communication skills.

## SCIENCE

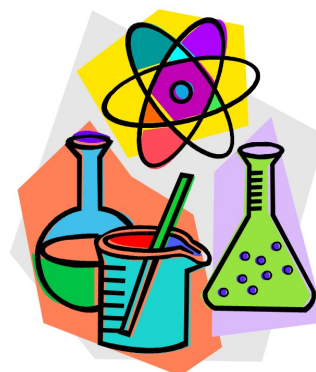
## AQA

### What will you study?

Science helps us to answer our biggest questions and to meet our most basic needs: from explaining the deepest mysteries of the universe to the structure of elementary particles that form atoms. The findings of science have fundamentally shaped every aspect of our world. Science

You will develop a scientific mindset that enables accurate observation and analysis, form evidence based conclusions and respond to new information and feedback.

These are important skills that can be applied to many aspects of your lives.



### How will you be assessed?

You will take either 'GCSE Combined Science' which is the equivalent of two GCSEs or 'GCSE Biology, Chemistry and Physics' which will be three separate GCSEs. Everyone will study the three sciences and develop a range of practical skills.

There is no coursework exam, however your ability to work scientifically, including practical skills and evaluation, will be tested in the GCSE exams in Year 11.

Both top sets of the year will take the three separate sciences. Groups will be finalised at the end of Year 9. Therefore there will not be an opportunity in Years 10 and 11 for set changes.

Set 4 students will study towards Foundation Tier Combined Science GCSE.. Experience shows that this gives you the best opportunity to attain the a good pass 5-5 in the GCSE at the end of year 11,

### What skills will you develop and which careers could this subject lead to?

GCSEs in Science provide many skills. As well as being a requirement for many areas of further study and careers, science is also highly regarded by employers who appreciate the need to have employees with high levels of scientific awareness and analytical skills.

For some careers, such as medicine, physiotherapy, engineering, pharmacy, astrophysics and climate change research, science is a necessity, but it is also useful in many other careers, such as finance and investment banking.

## CITIZENSHIP

Citizenship is a non-examined subject in Year 10. You will have one lesson a fortnight during which you will develop the knowledge, skills and understanding that you need to lead confident, healthy and independent lives.

Citizenship aims to help you understand how you are developing personally and socially, tackling many of the moral, social and cultural issues that are part of growing up.

The content will also be delivered across and beyond the curriculum, in specific lessons as well as in assemblies, tutor time and other enrichment opportunities.



## CAREERS & EMPLOYABILITY

Our Careers Education Information Advice and Guidance (CEIAG) programme includes a speed networking event in Year 9 and Business Day in Year 10 when you will visit local businesses in Guildford to explore how a business is run and the working environment. You will also meet former students to learn about their career journeys since leaving school.

In Year 11, you will have a 'practice' interview with an external interviewer, to develop your confidence and prepare you for the world of work. You will also receive one-to-one careers guidance from Mrs Calvert, our qualified Careers Adviser.



## PHYSICAL EDUCATION

Physical Education is compulsory at Key Stage 4.

'Sport for all, for Life' is our main intent. You will apply your skills and techniques mastered from Key Stage 3 into a variety of different and new activities.

You will continue to develop your physical, emotional and social well-being as well as leadership and organisational skills, through a variety of officiating and coaching opportunities.



## OPTION SUBJECTS

The following pages describe the optional subjects you can choose to study at GCSE or BTEC level:

- **Art GCSE**
- **Business Studies GCSE**
- **Certificate of Personal Effectiveness (CoPE)**
- **Computer Science GCSE**
- **Design Technology (Graphics OR Resistant Materials OR Textiles)**
- **Drama GCSE**
- **Enterprise BTEC TECH AWARDS**
- **Food Preparation & nutrition GCSE**
- **French GCSE**
- **Geography GCSE**
- **Health & Social Care BTEC TECH AWARD**
- **History GCSE**
- **ICT Cambridge National Information Technologies**
- **Music GCSE**
- **Physical Education GCSE**
- **Spanish GCSE**
- **Textiles and Fashion (GCSE)**

You can make 3 choices and 1 reserve choice.

**Remember:** When you complete your Options Form, please ensure that you list them in PREFERENCE order (ie. the subject you want to study most as your first choice, second, as your second choice, and ensure that you are happy to be given your third OR reserve choice (but again, put in preference order).

### **Difference between GCSE and vocational courses**

At the end of your GCSE course (in Year 11) you will sit examinations in your subject. With vocational courses such as BTECs, you will be assessed through coursework with less focus on exams (though there will still be some exams). Vocational courses are valued as equivalent to GCSE qualifications, but if you are opting for a rigorous academic career path, you should choose GCSE option subjects.



## ART GCSE

## EDUQAS

### What will you study?

In Art we believe that you should be given the opportunity to engage in a wide range of visual, tactile and sensory experiences which stimulate and encourage your creativity and imaginative responses. You will use a wide range of equipment, such as: paints, inks, pencils, charcoal, ceramics, pastels, found materials, computers, photography, rollers and printing inks. Opportunities will be given to use these materials and communicate what you see, feel and think. As an Art student you will explore colour, line, tone, shape, form, texture, pattern, and compositional design and combine these with a diverse range of techniques. You will make informed judgements about your own work and the work of others, expressing your appreciation and understanding of a range of artists and craftspeople. You will understand how and why humans respond to their immediate environment in diverse ways, and use this knowledge to enrich, shape and inform your own outcomes.



### How will you be assessed?

**Candidate portfolio** - This is worth 60% of your overall mark (internally assessed; externally moderated). The portfolio is completed over four terms and demonstrates different processes developed from personal and/or given starting points. Homework is an integral part of the course.

**Externally set task** - This is worth 40% of your overall mark (internally assessed; externally moderated). Work for this unit is completed during the spring term of Year 11. You will receive an exam paper, from which you will select a starting point and respond to this individually.



The Candidate portfolio and Externally set task are assessed against four assessment objectives: Critical understanding, Creative matching, Reflective recording and Personal presentation.

### What skills will you develop and which careers could this subject lead to?

Art and Design promotes spiritual, moral, social and cultural development. It encourages imagination, entrepreneurial skills, problem solving, and key skills such as communication, working with others and Information Technology. You will learn about the diverse roles and functions of Art, Craft and Design and how they are applied in society.

Possible Careers: Art Critic, Advertising (Visual Communication), Animation, Architect, Art Teacher, Art Dealer, Art Consultant, Cartoonist, Fashion Designer, Fine Art Photography, Fine Artist, Fashion Illustration, Graphic Artist, Graphic Design, Interior Design, Illustrator, Museum Director, Monogram Artist, Photographer, Painting Restorer, Print-maker, Sculptor, Set Design, Video Game Design and Web Design.



**BUSINESS STUDIES GCSE****AQA****What will you study?**

We understand that you will not have studied Business before taking this course, but that does not matter. You must have an interest in business, or want to start your own business one day. You must have an enquiring mind and be interested in learning about the world around you, how businesses are set up, and what qualities help to make someone a great entrepreneur.

You will be introduced to the world of small businesses and will look at what makes someone a successful business person. You will find out how to develop an idea and spot an opportunity, and turn that into a successful business. You will understand how to make a business effective and manage money well. You will also see how the world around us affects businesses and all the people involved.

**How will you be assessed?**

We use the AQA Business Studies syllabus; you will find a more detailed description of the assessment criteria on their website.

**Subject Content:**

1. Business in the real world
2. Influences on business
3. Business operations
4. Human resources
5. Marketing
6. Finance

**Assessment****Paper 1: Influences of operations and HRM on business activity****What's assessed:**

Business in the real world  
Influences on business  
Business operations  
Human resources

**How it's assessed:**

Written exam: 1 hour 45 minutes  
90 marks  
50% of GCSE

**Questions:**

- **Section A** has multiple choice questions and short answer questions worth 20 marks.
- **Section B** has one case study/data response stimuli with questions worth approximately 34 marks.
- **Section C** has one case study/data response stimuli with questions worth approximately 36 marks

**Paper 2: Influences of marketing and finance on business activity****What's assessed:**

Business in the real world  
Influences on business  
Marketing  
Finance

**How it's assessed:**

Written exam: 1 hour 45 minutes  
90 marks  
50% of GCSE

## BUSINESS STUDIES GCSE (CONT.)

### Questions:

- **Section A** has multiple choice questions and short answer questions worth 20 marks.
- **Section B** has one case study/data response stimuli with questions worth approximately 34 marks.
- **Section C** has one case study/data response stimuli with questions worth approximately 36 marks.

### What skills will you develop and which careers could this subject lead to?

This course is active and enjoyable. You need to be good at communicating and explaining your ideas, and not afraid of learning new things and working with numbers to solve business problems.

You will learn how to be a creative thinker and how to make decisions. What's more, you will also learn about the world of business through research and investigation, as well as through practical tasks.

This course will help you prepare for A Level & BTEC Level 3. Even if you do not want to go on to study Business further, you will have benefited, because whether you work for an organisation that runs to make a profit, or in non-profit making, all the business principles you learn on this course will be applicable in your future employment.

### Extra Curricular:

- Christmas Market
- The Apprentice Challenge



## Certificate in Personal Social Effectiveness (PSE)

### What will you study?

The Certificate in Personal and Social Effectiveness is an accredited achievement in personal skills development. It is an exciting, activity-based programme which encourages you to broaden your experience by trying out new activities through challenges. PSE supports you in developing your confidence, wellbeing and personal resilience and will help you foster a positive mind-set and develop the ability to be an independent learner who can both take initiative and work effectively with others.



You will complete the following skills units:

- Introduction to working with others
- Introduction to improving own learning and performance
- Introduction to problem solving
- Planning and carrying out a piece of research
- Communication through discussion
- Planning and giving an oral presentation

### How will you be assessed?

You will complete a portfolio of evidence generated from the skills units to demonstrate your achievement of all the learning outcomes at the required standard. This is then assessed by internal assessors and external moderators in Year 11 at the end of May. There is no exam. Achieving a Level 2 standard is the equivalent of a GCSE.

### What skills will you develop and which careers could this subject lead to?

The primary purpose of this qualification is to help you develop the key building blocks of personal and social effectiveness: the ability to communicate and collaborate and be emotionally intelligent.

These skills will support you to be successful in areas of life including studying other subjects at school and later in further and higher education, as well as in training and at work.



## COMPUTER SCIENCE GCSE

## PEARSON-EDEXCEL

### What will you study?

GCSE Computer Science is a fast-paced, engaging course aimed at those of you who are interested in developing your knowledge and understanding of how computers work and how to program. It is a subject that allows you to not only study the infrastructure, hardware and software that contribute to today's networks, but also the structure of the data itself and how it is stored. This GCSE qualification could help you to tackle some of the biggest challenges facing society.

### How will you be assessed?

The course is made up of two components (exams), which you will complete in the Summer of Year 11:

**Component 1** - Principles of Computer Science is a written examination lasting 1 hour and 30 minutes and is worth 50% of the qualification. This component focuses on the following five topics:

- Computational Thinking
- Data
- Computers
- Networks
- Issues and Impact.

We call this the Theory Paper and is nicely organised because each question is based on a topic. Therefore, there are five questions, each has multiple parts, but each question will remain focused on the one topic.

**Component 2** - Application of Computational Thinking is an onscreen examination lasting 2 hours and is also worth 50% of the qualification.

This component focuses on the topic Problem Solving with Programming. What makes this GCSE unique is the opportunity to demonstrate your knowledge and understanding of programming in a practical onscreen session. We call this the Programming Paper and many students enjoy being able to develop solutions to the six questions asked.



**COMPUTER SCIENCE GCSE (CONT.)****PEARSON-EDEXCEL****What skills will you develop, and which careers could this lead to?**

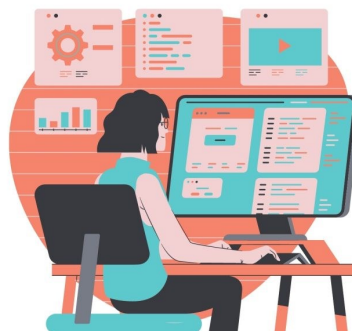
One of the key aspects you will develop is being able to independently solve problems. This is achieved by utilising the approach known as Computational Thinking. With practice you will be able to break a problem down, analyse it and suggest a solution in the form of an algorithm. While this skill is used a lot for programming, it is completely transferable to other subjects and interests.

In addition to Computational Thinking, you will develop your programming skills by learning how to code in Python. This high-level language is accessible and employs a simple syntax which students understand more easily. Python will be used to help you develop structured programming scripts that demonstrate the constructs of sequence, selection and iteration. In addition to these core constructs, you will also learn how to read data from and write data to files, as well as developing subprograms.

In terms of post-GCSE prospects, you will be able to use your problem-solving skills in a variety of contexts. There are many subjects that will benefit from the capabilities that you develop in GCSE Computer Science. Likewise, there are many careers that would also welcome employees with this skill set. Most industries and sectors are looking for people with computer science skills. One potential option would be to study A level Computer Science at St Peter's.

**Computer Science v. ICT?**

ICT and Computer Science are two qualifications offered by the Computing department. You should only choose to study one of the two, and you need to be aware of the differences between them. Computer Science focuses on understanding how computers work, and how programming is used to achieve specific objectives. In comparison, the ICT course provides you with the opportunity to develop your ability to use computers to provide and present information, in a variety of formats. There is some overlap between the two subjects in terms of some aspects of the theory, but the more practical software-based nature of ICT is reflected in the inclusion of an internally assessed component.



## DESIGN TECHNOLOGY GCSE WITH PRODUCT OR ARCHITECTURE FOCUS

AQA

### What will you study?

GCSE Design Technology will prepare students to participate confidently and successfully in an increasingly technological world. Students gain awareness and learn from wider influences on Design Technology including historical, social, cultural, environmental and economic factors. Students get the opportunity to work creatively when designing and making and apply technical and practical expertise.

All Design Technology GCSEs share a CORE theory module that is assessed in the exam. As a result, students can only study one of these Design Technology GCSEs. Students specialise in either: product design specialism, aimed at manufacturing skills and material knowledge primarily in plastics/ metals/ woods.; Architecture specialism, where students will learn about structures and architectural sketching and modelling skills.

Both of our specialisms use the same core theory and assessment structure of 50% exam (2 hours) and 50% coursework ( a digitally created design and make portfolio).

If you want to study Design Technology at GCSE you need to select your specialist subject when completing your option form so you are placed in the correct class.

### Product Focus (formerly Resistant Materials)

Studying with a product focus is an exciting and technical focus area, in which you solve real world practical problems using a range of materials including wood, metal, plastics and new smart materials. In doing this you will be creating real products to be used by real people. You will use the latest laser technology and a range of workshop tools and machinery, to realise your own design proposals. You will gain skills in producing quality graphical designs as well as using CAD software.



### Architecture Focus (formerly Graphics)

Studying with an architecture focus will enable you to design and model buildings and structures with creativity and originality, using a range of graphic and modelling materials. You will learn to use, understand and apply colour and design through images, to develop spatial concepts, and to understand paper and board materials and their manipulation. You will design and model buildings using computer aided design/ hand sketching skills/ various physical model making techniques to create scale models of design concepts.





## DESIGN TECHNOLOGY GCSE - WITH PRODUCT OR ARCHITECTURE FOCUS

### How will you be assessed?

This qualification is linear. The non-examination tasks are set by the exam board and together account for 50% of the GCSE marks.

Assessment	What is assessed?	How is it assessed?
<b>Paper 1</b> – 50% of GCSE	<p>Section A (20 marks) – general knowledge from all specialisms</p> <p>Section B (30 marks) – specialist knowledge where you pick only the questions you have studied for your specialism</p> <p>Section C (50 marks) – knowledge of design and making (including 15% maths and science skills)</p>	Written exam: 2 hours
<b>Non-examination assessment (NEA)</b> – 50% of GCSE	Students complete a Graphics, Resistant Materials or Textiles project based on a contextual challenge set by the exam board. You will be given the choice of three contexts, one of which you will choose and eventually create a final piece.	An electronic folder in A3 of around 20,000 words involving research, investigation, practical making and evaluation.

### What skills will you develop and which careers could this lead to?

Across both D&T specialisms the core employability skills are the same. You will be taught to : think and explore problems; learn how to interact with and learn from real clients; how to solve real life problems that they have investigated.

You are also taught practical workshop skills and all (regardless of specialism) learn the core skills of measuring and marking accurately, as well as material properties and basic engineering principles.

15% of the course uses maths and science content, but give it a practical application, again using real world examples.

D&T develops you into someone who can think and work logically and independently.

Common careers you could go into following a GCSE in D&T include:

- Engineering
- Architecture
- Product Design
- Fabrication and manufacturing.
- Furniture design and making.
- Design for stage and screen.
- Construction for stage and screen.



**DRAMA GCSE****OCR****What will you study?**

Drama is an exciting and creative GCSE, in which you'll explore a wide variety of plays, situations and characters. You'll create and devise your own performances as well as performing in plays written by other people. You will learn about different genres and performance styles and the ways in which performers and designers communicate meaning to an audience.



This practical, creative subject refines your teamwork skills, rewards your creativity, and teaches you about people and places outside your own experience. Your vocal, movement and presentation skills will be honed so that you can confidently engage an audience and hold their rapt attention; invaluable skills for any future career.

**How will you be assessed?****Component One – Performance and Response —40% of GCSE**

- You complete a written exam lasting 1 hour and 30 minutes.
- You'll answer questions on a play (Kindertransport) and on a live theatre production you'll have seen at the theatre during the course.

**Component Two – Devising Drama - 30% of GCSE**

- You'll devise an original piece of drama in groups, and act in the final performance.
- You'll write a portfolio explaining your intentions for the performance.

**Component Three – Presenting and Performing Texts - 30% of GCSE**

- Performance of two extracts from one play.
- Final performance marked by an external examiner.

**What skills will you develop and which careers could this subject lead to?**

The UK's theatre scene is world-leading, and the Performing Arts contribute £5.4 billion a year to the national economy. Theatre, Film and TV are growth industries in Britain. Our GCSE in Drama provides many extra-curricular opportunities to see and enjoy live performance on trips and in school.

With a Drama GCSE you'll acquire skills in working with others, problem-solving and communication, and will develop your imagination, creativity and concentration. These skills are in great demand and are recognised and highly valued by employers and colleges.

Drama GCSE is a great asset for all careers working with other people, including PR, advertising, marketing, journalism, sales, business management, law, teaching, speech therapy and social work and all aspects of work in theatre, film and TV.



**ENTERPRISE BTEC TECH AWARD****EDEXCEL****What will you study?**

BTEC Tech Awards are new Key Stage 4 BTECs, where you develop knowledge and understanding by applying your learning and skills in a work-related context. Additionally, they are popular and effective because they encourage you to take responsibility for your own learning and to develop skills that are essential for the modern-day workplace. These skills include: team work; working from a prescribed brief; working to deadlines; presenting information effectively; and accurately completing administrative tasks and processes. BTEC Tech Awards open doors to progression into further study and responsibility within the workplace.

Enterprise BTEC helps you to gain practical experience in developing the skills you will need to set up and run a business. The qualification is the equivalent to a GCSE and high achievers can add on additional units to increase the value of their qualification.

**How will you be assessed?**

The course comprises:

Unit 1: Exploring Enterprises (external assessment)

Unit 2: Planning for and Running an Enterprise (external assessment)

Unit 3: Promotion and Finance for Enterprise (external and synoptic assessment)

<https://qualifications.pearson.com/en/qualifications/btec-tech-awards/enterprise.html>

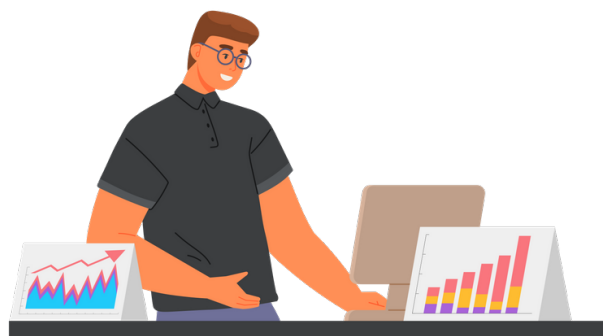
**What skills will you develop and which careers could this subject lead to?**

This course is active and develops skills which will have lifelong relevance. You will receive individual career planning and tailor made opportunities to discover career opportunities that will best suit you. What you learn doing this course will be appropriate in helping you move on to vocational courses and apprenticeships. Experts are invited in where appropriate and you are encouraged to become mature and independent learners.

The course supports other GCSE courses and you are encouraged to approach the lessons as a work environment rather than another GCSE and thus expectations of maturity and responsibility are high.

**Extra Curricular:**

- Christmas Market
- The Apprentice Challenge



**AQA**

This GCSE Food Preparation and Nutrition course is exciting and creative, and focuses on practical cooking skills to ensure you develop a thorough understanding of nutrition, food provenance and the working characteristics of food materials. At its heart, this qualification focuses on nurturing your practical cookery skills to give you a strong understanding of nutrition.

- Food, nutrition and health
- Food science
- Food safety
- Food choice
- Food provenance



This qualification is linear. The two non-examination tasks (NEA) are set by the exam board and together account for 50% of the GCSE marks.

Assessment	What is assessed?	How is it assessed?
<b>Paper 1</b>  50% of GCSE	Theoretical knowledge of food preparation and nutrition	Written exam: 1 hour 45 minutes  100 marks
<b>Non-examination assessment Task 1</b> 15% of GCSE  Food investigation (30 marks)	Your understanding of the working characteristics, functional and chemical properties of ingredients	Written or electronic report (1,500–2,000 words) including photographic evidence of the practical investigation
<b>Non-examination assessment Task 2</b> 35% of GCSE  Food preparation assessment (70 marks).	You will prepare, cook and present a final menu of three dishes within a single period of no more than three hours, planning in advance how this will be achieved	Written or electronic portfolio including photographic evidence. Photographic evidence of the three final dishes must be included

Upon completion of this course, you will be qualified to go on to further study, or embark on an apprenticeship or full time career in the catering or food industries. You will be a confident and competent cook with a detailed knowledge of nutrition.

## FRENCH GCSE

## AQA

### What will you study?

A GCSE in a modern foreign language will develop essential communication skills and will add an international dimension to your studies. Over the two years, you will build on the important language skills that have been introduced to you at Key Stage 3. The GCSE course will introduce you to a wider range of language structures and vocabulary, which in turn will be used in different contexts. There are a range of topics to be studied such as Freetime and Leisure, Home and Environment, and Work and Education. In Year 10, our students will have the opportunity to practice their French by participating in our 4-night residential trip to Paris.

### How will you be assessed?

The course will be assessed in 4 parts (equally weighted - 25% of GCSE) and at the end of the 2 years, students will sit the following papers:

**Paper 1- Listening** (Higher)- 45 mins. Students will answer multiple choice/tick box answers, as well as in English and French.

**Paper 2- Speaking** (Higher)- 10-12 mins. Students will prepare a role play, a photo card and then have a general discussion on two of the three themes that they have studied.

**Paper 3- Reading** (Higher)- 1 hr. Students translate key details, summarise, and identify points. Tasks are multiple choice although some answers will be required in French and others in English. There is one passage to be translated from French to English.

**Paper 4- Writing** (Higher)- 1 hr 15 mins. Students will produce paragraphs in French and will need to complete 3 questions. For the first two tasks there will be a choice of three questions to answer. For the final task, students will have to translate from English to French.



### What skills will you develop and which careers could this subject lead to?

A great way to start getting to know and understand other people better is by learning their language. It's a multilingual world – not everyone speaks English. 94% of the world does not speak English as their first language, with 75% of the world not speaking English at all.

Languages can of course be used in language-specific careers such as teaching, translating or interpreting, but they are also useful in many other jobs from receptionist to top level management or lawyers and can often be the deciding factor between candidates when interviewing for a position.

Languages can improve the quality of your life and your understanding of how other people live and think. A student with a qualification in a foreign language will be sought after by universities, colleges and employers alike.

### Trips

- Residential trip, 4 nights to Paris

**GEOGRAPHY GCSE****AQA****What will you study?**

Whether it's the devastation caused by a natural disaster on the other side of the world or the increasing demand for resources here in the UK, geographers have a keen interest in the world around them. In GCSE Geography you will study the world around you, how it is changing and the story behind these changes. You will study how natural processes have made our planet what it is today. You will study how natural events affect people and how we might try to manage the negative effects while learning about the challenges facing people because of changing economies and rapidly growing cities.

**How will you be assessed?**

We study the AQA Geography course. At the end of the course, you will sit three exams. Paper 1 focuses on the physical environment while Paper 2 looks at the human environment; both of which are 90 minutes long exams. These exams are a mixture of multiple choice, short answer questions and questions that require a longer written response.

The third paper is the Geographical Applications paper which is a 75-minute exam. This paper is split into two parts: Issue Evaluation and Fieldwork. In the Issue Evaluation section, you will be asked to use the skills you have developed over the course of two years, such as problem solving, to investigate a geographical issue. The Fieldwork section of this paper tests your understanding of how to take part in a geographical investigation and apply it to any environment.

For each paper you will study the topics listed below.

**Paper 1: Living with the Physical Environment:**

- Tectonic hazards such as earthquakes and volcanoes.
- Climatic hazards such as tropical storms.
- The impact of extreme weather events in the UK.
- The causes, effects and responses to climate change.
- The UK's coastal landscapes including how coastlines are managed.
- The UK's river landscapes including how rivers are managed.
- Ecosystems including tropical rainforests and hot deserts.

**Paper 2: Challenges in the Human Environment:**

- The impact of urban growth in poorer parts of the world.
- The challenges facing UK cities and what can be done to solve these problems.
- How urban living can be made more sustainable.
- How and why levels of development vary across the world and what can be done to close the gap between the richest and poorest countries.
- How the UK's economy is changing and the impact of this.
- The problems created by the increased demand for energy, food and water both in the UK and across the world and what is being done to solve these problems.

**What skills will you develop, and which careers could this lead to?**

There are a number of skills you will learn and develop as you study geography: maps reading, math skills, analysis, investigative, decision making and problem solving. Two days of fieldwork is compulsory as this is a key skill you will have as a geography student. With this you will also learn how to plan an investigation, present and analyse your findings, draw conclusions and evaluate your outcomes.

These skills can prepare you for a variety of different careers where you could work for any of the following: the armed forces, charities, the Civil Service, environmental consultancies, environmental protection agencies, information systems organisations, Ministry of Defence, police service and private companies.

**Trips to:** Stratford, West Wittering, Iceland

**HEALTH & SOCIAL CARE BTEC TECH AWARD****EDEXCEL****What will you study?**

BTEC Tech Awards are new Key Stage 4 BTECs, where you develop knowledge and understanding by applying your learning and skills in a work-related context. Additionally, they are popular and effective because they encourage you to take responsibility for your own learning and to develop skills that are essential for the modern-day workplace. These skills include: team work; working from a pre-scribed brief; working to deadlines; presenting information effectively; and accurately completing administrative tasks and processes. BTEC Tech Awards open doors to progression into further study and responsibility within the workplace.



Health and Social Care BTEC helps you gain practical experience in developing the skills you will require in the world of work. The qualification is the equivalent to a GCSE and high achievers can add on additional units to increase the value of their qualification.

**How will you be assessed?**

The course comprises:

Unit 1: Human Lifespan Development (internal assessment)

Unit 2: Health and Social Care Services and Values (internal assessment)

Unit 3: Health and Wellbeing (synoptic and external assessment)

<https://qualifications.pearson.com/en/qualifications/btec-tech-awards/health-and-social-care/coursematerials.html#filterQuery=category:Pearson-UK:Category%2FSpecification-and-sample-assessments>

**What skills will you develop and which careers could this subject lead to?**

This course is active and develops skills which will have lifelong relevance. You will receive individual career planning and tailor made opportunities to discover career opportunities that will best suit you. This course is particularly relevant to those who want to pursue a career in nursing, social care, personal training and animal care.

**Extra Curricular**

- Visits to nurseries and Art Venture
- Speakers from a wide variety of health professions



**HISTORY GCSE****EDEXCEL****What will you study?**

In History you will develop and extend your knowledge and understanding of specified key events in world history. The course is designed to help you become an independent and reflective learner.

**How will you be assessed?**

The course is structured with written 3 exams.

**Paper 1 – Thematic study and historic environment.**

*Written examination: 1 hour and 15 minutes (30% of the qualification)*

Crime and punishment in Britain, c1000–present and Whitechapel, c1870–c1900: crime, policing and the inner city.

**Paper 2 – Period study and British depth study**

*Written examination: 1 hour and 45 minutes (40% of the qualification)*

Henry VIII and his ministers, 1509–40

Superpower relations and the Cold War, 1941–91

**Paper 3 - Modern depth study**

*Written examination: 1 hour and 20 minutes (30%\* of the qualification)*

Weimar and Nazi Germany, 1918–39

**What skills will you develop and which careers could this subject lead to?**

History is not only interesting, it is very useful in your future career path. Employers who see that you have a qualification in history know that you have developed many key skills which can be applied to working scenarios. They will know that: you can understand and interpret information and data from a range of sources and identify patterns and trends in this data. You will have demonstrated a good level of literacy and will be able to communicate your ideas in a fluent and effective manner.

A GCSE in History will give you a highly regarded and respected qualification. It can also be the stepping stone into a number of different career paths; these include the legal profession, journalism, politics and criminology, TV script writing, civil service, teaching to name but a few.



## VOCATIONAL AWARD IN ICT

## WJEC

### What will you study?

WJEC Vocational Award in ICT is a practical, engaging course aimed at those of you who are interested in developing your knowledge and understanding of how to use information communication technology for specific purposes.

It is a subject that allows you to not only develop your skills across a range of software and hardware, but also improve your theory knowledge of the technology used to make this possible.

There is a vocational emphasis, but this should not detract from the education value of the qualification and the progression opportunities it provides.



### How will you be assessed?

The course consists of two units of assessment. You must pass both units to complete the qualification successfully. Here is a brief overview of the units:

**Unit 1 – ICT in Society** (External assessment): This unit allows you to explore the wide range of uses of hardware, application and specialist software in society. You will investigate the use of information technology in a range of contexts, including business and organisations, education, and home use. The summative assessment for this unit is a written examination that is worth 40% of the final grade.

**Unit 2 – ICT in Context** (Internal assessment): This unit enables you to gain a broad working knowledge of databases, spreadsheets, automated documents and images. You will be required to apply your knowledge and understanding to solve problems in vocational settings. The summative assessment for this unit is a Non-Examined Assessment set by the exam board that is worth 60% of the final grade.

### What skills will you develop, and which careers could this lead to?

One of the key aspects of the course is being able to create and improve digital products that meet specified objectives. You will learn a variety of skills to enhance your understanding of software packages. You will also evaluate your work to ensure it meets the needs of the audience and is fit for purpose.

In addition to the practical skills, you will develop your understanding of the relevant theory regarding project management, data handling, presenting information and relevant legislation. In terms of post-16 prospects, you will be able to use your practical skills in a variety of contexts. There are many subjects that will benefit from the capabilities that you develop in ICT. Likewise, there are many careers where employers are looking for individuals with good ICT skills.

### ICT vs Computer Science?

ICT and Computer Science are two qualifications offered by the Computing department. You should only choose to study one of the two, and you need to be aware of the differences between them. Computer Science focuses on understanding how computers work, and how programming is used to achieve specific objectives.

In comparison, the ICT course provides you with the opportunity to develop your ability to use computers to provide and present information, in a variety of formats. There is some overlap between the two subjects in terms of some aspects of the theory, but the more practical software-based nature of ICT is reflected in the inclusion of an internally assessed component.

**MUSIC GCSE****EDEXCEL****What will you study?**

GCSE Music is an academic, interesting and engaging course which covers a wide range of styles and genres of music. The course is made up of the three key elements that have been studied throughout Key Stage 3:

- Performing
- Composing
- Listening & Appraising.

GCSE Music will inspire you to develop your musical knowledge, understanding and practical performance and composition skills through GCSE and beyond. You will be encouraged to be critical and creative in, and with, a wide range of musical styles and develop an understanding of the place of music in different cultures and contexts. You will also develop your wider listening skills to build transferable appraising skills.

If you are considering taking GCSE Music as an option, you need to enjoy participating in extra-curricular clubs and be prepared to develop your music theory knowledge. It would also be useful to be having music lessons on an instrument (includes voice) but it is not essential – discuss this with your music teacher.

**How will you be assessed?**

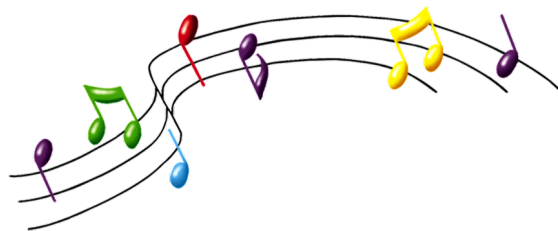
We follow the EDEXCEL specification.

**AO1 – Performing** 30% of total assessment (NEA)

Candidates perform one solo and one ensemble piece either on an instrument or using their voice.

**AO2 – Composing** 30% of total assessment (NEA)

Candidates are required to compose two pieces of music, one to a brief set by the exam board and one free composition.

**AO3 – Listening & Appraising** 40% of total assessment.

## MUSIC GCSE (CONT.)

A 1 hour and 45 minute written examination responding to extracts of music played. Questions set will be on music from the four areas of study covered throughout the two years:

### a) Instrumental Music 1700-1820

- \* J.S. Bach Brandenburg Concerto no5 in D major
- \* Beethoven Piano Sonata No8 in C minor

### b) Vocal Music

- \* Purcell 'Music for a While'
- \* Queen 'Killer Queen'



### c) Music for Stage and Screen

- \* 'Defying Gravity' from Wicked
- \* 'Main title/Rebel Blockade Runner' from Star Wars Episode 4 'A New Hope'



### d) Fusion

- \* Afro Celt Sound System: 'Release'
- \* 'Samba em Preludio' from Esperanza

There will also be sections on Musical Dictation, a question on Wider Listening and an essay question comparing a Set Work with an unfamiliar piece.

## What skills will you develop and which careers could this lead to?

Music provides transferable skills that are useful in ANY career. Employers recognise the persistence, resilience and preparation that are needed to play an instrument or sing well in front of an audience. They appreciate how music helps develop the seven skills that define employability (CBI) including composure under pressure, time management, communication, team and individual working ability.

Interestingly, the University of Cambridge considers it as useful preparation for any arts or social sciences degree and there are more trainee medics who have studied music than have studied any other Options subject!

## PHYSICAL EDUCATION GCSE

## EDEXCEL

**What you will study?**

Physical Education will encourage you to be inspired, motivated and challenged by a broad course of study. The content has been designed to allow you to study Physical Education in an academic setting, allowing you to critically analyse and evaluate physical performance and apply your experience of practical activities in developing knowledge and understanding of the subject and the science behind it.



The examined components will provide the knowledge and understanding which underpin the practical and synoptic assessment. The practical assessment will allow you to explore a range of activities in the role of a performer, including both team and individual activities. You will also analyse and evaluate performance in a chosen activity as part of your synoptic assessment. This engaging course aims to develop and build capacity, character and resilience.

If you are considering taking GCSE Physical Education as an option, you need to be participating in extra-curricular clubs and competing outside of school..

**How will you be assessed?****Component 1: Fitness and Body Systems Science Exam (30%)**

- Applied anatomy & physiology, movement analysis & physical training

**Component 2: Health and Performance Exam (30%)**

- Sports psychology, socio-cultural and health, fitness and well-being

**Component 3: Practical Activity Assessment (30%)**

- Performance of three activities taken from the two approved lists, one from the 'individual list', one from the 'team list' and one from either list.

Team Practical Activities	Individual Practical Activities
Association Football; Badminton; Basketball; Cricket; Dance; Gaelic Football; Handball; Hockey; Netball; Rowing; Rugby Union; Squash; Table Tennis; Tennis & Volleyball	Amateur boxing; Athletics; Canoeing; Track Cycling; Platform Diving; Equestrian; Golf; Gymnastics; Kayaking; Sculling; Rock climbing; Skiing; Snowboarding; Swimming & Trampolining

**Component 4: Evaluating and Analysing Performance (10%)**

- Planning, completing & evaluating your own personal exercise programme)

**What skills will you develop and which careers could this lead to?**

This course will prepare you for the further study of Physical Education as well as other related subject areas such as Psychology, Sociology and Biology. You will also develop the transferable skills that are in demand by further education, higher education and employers in all sectors of industry.

This course will create confident, independent thinkers and effective decision makers who can operate effectively as individuals and as part of a team, all skills that will enable you to stand out and effectively promote yourself as you progress through life.

## SPANISH GCSE

## AQA

**What will you study?**

A GCSE in a modern foreign language will develop essential communication skills and will add an international dimension to your studies. Over the two years, you will build on the important language skills that have been introduced to you at Key Stage 3. The GCSE course will introduce you to a wider range of language structures and vocabulary, which in turn will be used in different contexts. There are a range of topics to be studied such as Free time and Leisure, Home and Environment, and Work and Education.

**How you will be assessed?**

The course will be assessed in 4 parts (equally weighted - 25% of GCSE) and at the end of the 2 years, you will sit the following papers:

**Paper 1- Listening** (Higher)- 45 mins. You will hear short passages in spoken Spanish and will answer multiple choice/tick box answers, as well as comprehension tasks both in English and Spanish.

**Paper 2- Speaking** (Higher)- 10-12 mins. You will prepare a role play, a photo card and then have a general discussion on two of the three themes that you have studied.

**Paper 3- Reading** (Higher)- 1 hr. You will read short passages in Spanish and complete tasks such as True or False, Multiple choice and respond to comprehension style questions. There is also a passage to be translated from Spanish into English.

**Paper 4- Writing** (Higher)- 1 hr 15 mins. You will write two essays in Spanish; one 90 word essay and one 150 word essay. For the final task, you will have to translate a short passage from English to Spanish.

**What skills will you develop and which careers could this lead to?**

A great way to start getting to know and understand other people better is by learning their language. It's a multilingual world – not everyone speaks English. 94% of the world does not speak English as their first language with 75% of the world not speaking English at all.

Languages can of course be used in language-specific careers such as teaching, translating or interpreting, but they are also useful in many other jobs from receptionist to top level management and can often be the deciding factor between candidates when interviewing for a position.

Languages can improve the quality of your life and your understanding of how other people live and think. By choosing to study Spanish at GCSE, you know you will be developing a skill that will be sought after by universities, colleges and employers alike.



## TEXTILES AND FASHION GCSE

**AQA**

### What will you study?

Textile design is an extremely practical subject in which every lesson is about experimenting with techniques and processes. You are learning to be designers and makers and explore the creation of your designs and products in a wide range of different materials.

You will look at a range of sources of inspiration to aid the development of your ideas covering cultural, social, historical, contemporary, environmental and creative contexts. You will constantly reflect on how ideas, feelings, forms, and purposes can generate and develop ideas.

### How will you be assessed?

Coursework based assessment with no written exam.

There are two parts to the coursework.

**Component 1 worth 60%** This is set in school as part of an extended piece of work.

**Component 2 worth 40%** is set by the exam board and is called an Externally Set Assignment and you will receive this in January of Year 11.

### What skills will you develop and which careers could this subject lead to?

Textiles is a practical subject and helps you see the world in a creative way by studying different cultures and designers' work and by doing this you gain a unique perspective when it comes to problem solving.

You gain practical life skills learnt through the construction of garments and textile products and a wealth of knowledge about materials and fabrics.

Potential path to careers including: Theatre and costume designer, Milliner, Window Dresser, Trainer and shoe design, Research and development of fabrics, Wearable technology, Retail Buyer, Interior Design, Fashion designer, Print designer, Textile Technologist, Tailor, Textile designer, Colour Technologist, Pattern Cutter



**NOTES**



## YEAR 9 OPTIONS FORM

Options choices will be made online, with instructions issued following the Year 9 parents evening. The deadline for choices is **Monday 26<sup>th</sup> February**.

You can make 3 choices and 1 reserve choice.

**Remember:** when you complete your Options choices please ensure that you list your choices in PREFERENCE order (i.e. the subject you want to study most as your first choice, second, as your second choice, and ensure that you are happy to be given your third OR reserve choice (but again, put in preference order).